

LPA900 – LPD1000 Wall systems

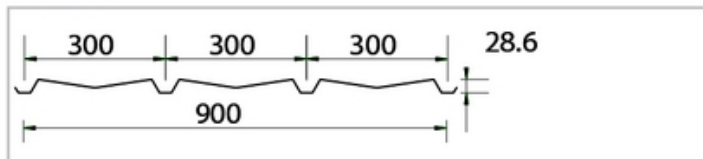
Combination of architectural aesthetics and energy-efficiency

LPA900 - LPD1000 wall systems

The LPA900 - LPD1000 consist of ribbed steel panels, externally fixed to the secondary framing with self-drilling screws with composite nylon heads, coloured to match the sheeting.

Two external panels are available, LPA900 - LPD1000 offering distinct architectural aspects:

LPA900

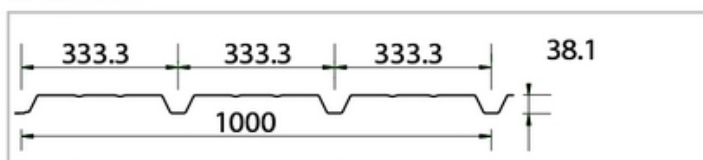


COLOURS AND COATINGS:

Several exterior coatings are available (superpolyester 25 micron, PVDF 25 micron)

Most used colours: 01 14 15
18 21 50

LPD1000



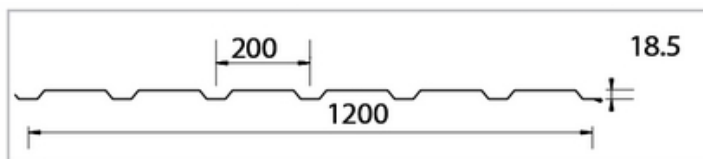
COLOURS AND COATINGS:

Several exterior coatings are available (superpolyester 25 micron, 35 micron)

Most used colours: 01 12 18

INSIDE SHEETING

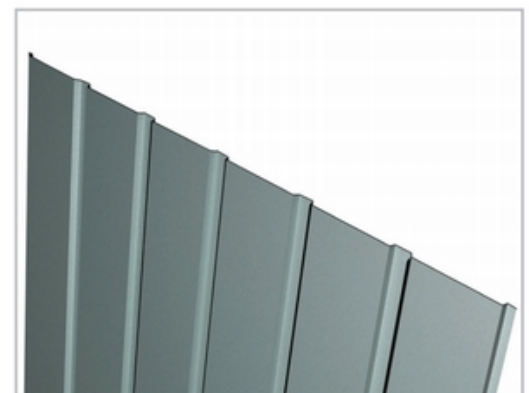
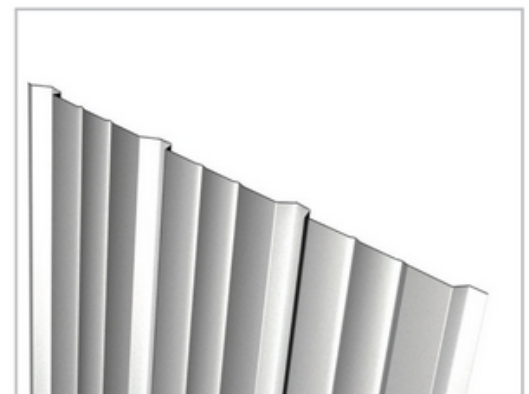
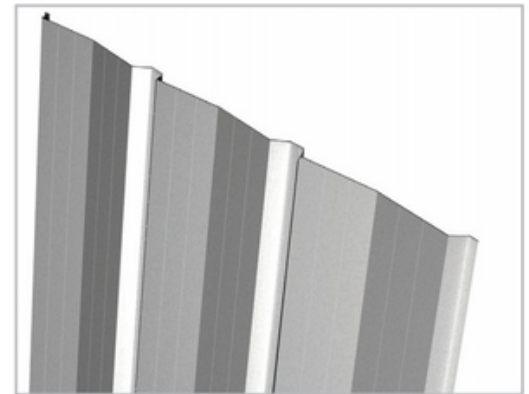
Two inside sheeting options are available, LPI1200, and the perforated LPG1000 for a pleasing interior finish and excellent sound absorption. Both panels hide the secondary framing.



NB: for more colours please refer to the official Astron colour fan

ADVANTAGES:

- Economical, functional and durable construction
- Aesthetically pleasing panel with discreet ribbed profile
- Easy replacement of damaged panels
- Simple and quick erection
- High performance coatings
- Large range of integrated accessories
- All flashings and connecting parts



ACCESSORIES:

- single or double personnel doors,
- translucent panels,
- wall louvres,
- framed openings,
- flashings and trims...

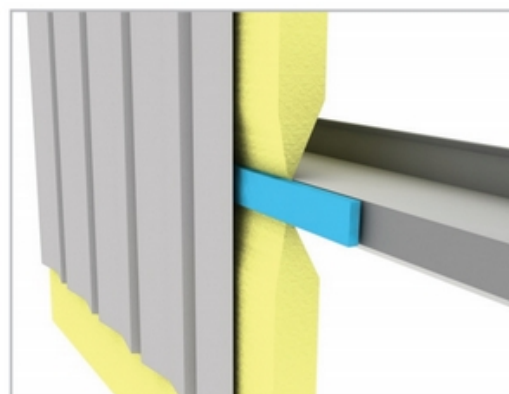
Three effective systems

SINGLE SKIN WALL WITH OR WITHOUT ISOBLOC:

- This system is the most cost-effective
- The insulation is made of soft faced glass fiber providing good acoustical comfort
- It is available with Isobloc to increase insulation thickness for improved overall thermal performance and reduction of thermal bridges
- Optional inside sheeting (plane LPI1200 or perforated LPG1000) can be fixed internally to conceal the secondary wall framing

Insulation (mm)	40	60	80	80+	100+
U-value $W/(m^2 \cdot K)$	0,91	0,79	0,61	0,54	0,45

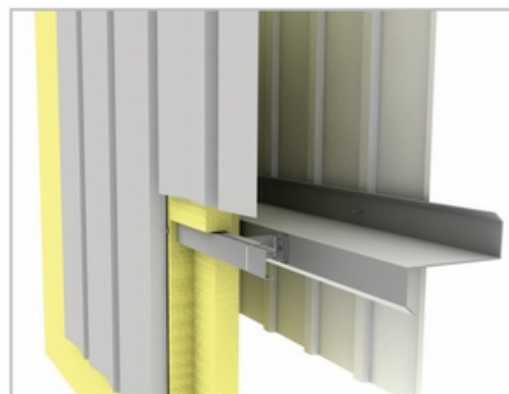
+: with Isobloc



SINGLE SKIN WALL WITH BRIDGE:

- This system offers superior thermal efficiency and advanced condensation control by reducing the thermal bridge to a minimum. It also prevents the insulation being compressed at the location of the secondary framing elements
- It increases insulation thickness through spacer bridge
- Optional inside sheeting (plain or perforated) can be fixed internally to conceal the secondary wall framing

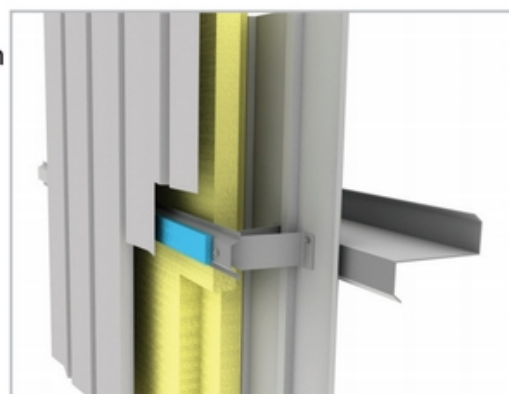
Insulation (mm)	120	140	160
U-value $W/(m^2 \cdot K)$	0,33	0,30	0,29



DOUBLE SKIN WALL:

- This system offers the best possible insulation values up to a thickness of 160mm
- It includes all the advantages of the bridge solution
- The white faced internal liner panel provides a solid aesthetic appearance, acts as a vapour barrier and provides an improved fire rating over the faced insulation options
- Optional acoustic panels are available for increased noise absorption

Insulation (mm)	120	140	160
U-value $W/(m^2 \cdot K)$	0,32	0,28	0,24



www.astron.biz



Astron is the brand name of the products sold by the Building Systems Business area of the Lindab group, Europe's largest manufacturer of steel building systems for industrial, office and commercial use.

Lindab-Astron produce up to 1,000 buildings a year, distributed either through a network of 400 certified independent Builders, spanning nearly 40 countries or through our Key Accounts Unit. Our headquarters is located in Diekirch (Luxembourg). Lindab's concept is clear and simple:

We simplify construction

Lindab-Astron:

<http://www.astron.biz/contact/Astron.html>

Luxembourg:

Route d'Ettelbruck
L-9230 Diekirch
Tel.: +352 80291-1
Fax: +352 803466

Czech Republic:

Kojetinská 71
CZ-75053 Píerov
Tel.: +420 581 250 222
Fax: +420 581 250 205

Hungary:

Derkovits u. 119.
H-4400 Nyiregyháza
Tel.: +36 42 501 310
Fax: +36 42 312 029

Russia:

ul. Sovetskaya 69
RUS-15003 Yaroslavl
Tel.: +7 4852 42 70 43
Fax: +7 4852 42 70 43-115

Germany:

Wilh.-Theodor-Römheld-Str. 32
D-55130 Mainz
Tel.: +49 (0)6131 8309-00
Fax: +49 (0)6131 8309-20

Poland:

ul. Kolejowa 311
Sadowa
PL-05-092 Łomianki
Tel.: +48 (0)22 489 88 91
Fax: +48 (0)22 489 88 98

France:

20, r. Pierre Mendès-France
Torcy, CEDEX 01
F-77202 Marne-la-Vallée
Tel.: +33 (0)1 6462-1616
Fax: +33 (0)1 6462-1092

United Kingdom:

Evans Business Centre
Mitchelston Ind. Estate
GB-Kirkcaldy, Fife
Scotland KY13 UF
Tel.: +44 1592 65 23 00
Fax: +44 1592 65 31 35

Russia:

14G, Magistralnaya str.
Building 1
RUS-123290 Moscow
Tel.: +7 495 981 3960
Fax: +7 495 981 3961

Ukraine:

Saksaganskogo Str. 123
office 3
UA-01032 Kiev
Tel.: +380 44 490 6164
Fax: +380 44 490 6759

Romania:

Soseaua de Centura nr. 8
Stefanestii de Jos
RO-077175 Ilfov
Tel.: +40 21209 4100
Fax: +40 21209 4124

Italy:

Via S. Martino Solferino 40
I-35122 Padova
Tel.: +39 333 3286388
Fax: +39 049 658367

Bulgaria:

Str. «Captain D. Spisarevski» №38
BG-1592 Sofia, Drujba 1
Tel.: +359 2 979 97 00
Fax: +359 2 979 97 01

Belarus:

pr-t gazety "Prawda", 11
BY-220116 Minsk
Tel.: +375 29 311 44 59
Fax: +375 17 270 38 95

Lithuania:

Mokslininkų g. 20
LT-08412 Vilnius
Tel.: +370 5 272 97 29
Fax: +370 5 272 97 30